

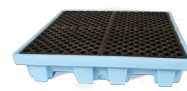


**ULTRATECH**  
INTERNATIONAL, INC.

# 4-Drum Spill Containment Comparison Guide



	Spill Pallet P4	Economy Spill Pallet P4	Nestable Spill Pallet	Fluorinated Spill Pallet P4	Spill Pallet P4 Plus	Flexible Spill Pallet P4	Spill King
<b>Part No.</b>	1000 - No Drain 1001 - With Drain	1112 - No Drain 1113 - With Drain	1230 - No Drain 1231 - With Drain	1233 - No Drain 1232 - With Drain	9630 - No Drain 9631 - With Drain	1341 - No Drain 1346 - With Drain	0801 - No Drain 0802 - With Drain
<b>Drain</b>	Optional	Optional	Optional	Optional	Optional	Optional	Optional
<b>Material</b>	Polyethylene	Polyethylene	Polyethylene	Fluorinated Polyethylene	Polyethylene	PVC	Polyethylene
<b>Containment Cap. (gal)</b>	66	66	66	66	75	66	85
<b>Weight Cap. (lbs)</b>	6000	3000	6000	6000	9000	2400	6500
<b>Forkliftable</b>	4-Way	4-Way	2-Way	2-Way	4-Way	No	4-Way
<b>Ramp</b>	Optional - p/n 0678	Optional - p/n 0678	Optional - p/n 0676	Optional - p/n 0676	Optional - p/n 0676	No	No
<b>Dims. (L x W) in.</b>	53 x 53	53 x 53	51 x 51	51 x 51	62 x 62	48 x 48	51 x 51
<b>Dims. (H) in.</b>	11.75	11.75	10	10	8.75	7	17.5
<b>Shipping</b>	Truck	Truck	Truck	Truck	Truck	Parcel	Truck
<b>Color</b>	Yellow	Black	Yellow	Light Blue	Yellow	Yellow	Gray pallet and burgundy sump
<b>Cost</b>	\$\$	\$	\$\$	\$\$\$	\$\$	\$	\$\$
<b>Advantage</b>	High visibility	Low price	Nestable	Better chemical compatibility	Weight capacity. Low profile.	Low price. Disassembles into smaller component for shipping/storage	Containment capacity. Separate handling pallet.



More on back



**ULTRATECH**  
INTERNATIONAL, INC.

# 4-Drum Spill Containment *Comparison Guide continued*



	Steel Pallet, 4-Drum	Spill Deck Bladder System P4	4-Drum Inline Spill Deck	Flexible Spill Deck Bladder System, 4-Drum	Hard Top P4	Hard Top P4 Plus
<b>Part No.</b>	1182	2330	2361	1352	1080 - No Drain 1081 - With Drain	9636 - No Drain 9637 - With Drain
<b>Drain</b>	No	No	No	No	Optional	Optional
<b>Material</b>	Steel	Polyethylene	Polyethylene	PVC	Polyethylene	Polyethylene
<b>Containment Cap. (gal)</b>	68	110	110	110	66	75
<b>Weight Cap. (lbs)</b>	3875	6000	6000	6000	6000	9000
<b>Forkliftable</b>	4-Way	No	No	No	4-Way	2-Way
<b>Ramp</b>	No	Optional - p/n 1089	Optional - p/n 1089	No	Optional - p/n 0678	Optional - p/n 0676
<b>Dims. (L x W) in.</b>	47.25 x 47.25	52 x 56.5	104 x 25.75	116 x 66	57 x 54	64.5 x 62
<b>Dims. (H) in.</b>	13.25	5.75	5.75	5	64.5	79
<b>Shipping</b>	Truck	Parcel	Parcel	Parcel	Truck	Truck
<b>Color</b>	Silver	Yellow	Yellow	Yellow	Yellow	Yellow
<b>Cost</b>	\$\$\$	\$\$	\$\$\$	\$	\$\$\$\$	\$\$\$\$
<b>Advantage</b>	Won't melt in fire	Low profile.	Low profile. Inline configuration.	Low price. Low profile. Disassembles into smaller component for shipping/storage	Outdoor (covered) containment	Outdoor (covered) containment

