



ULTRATECH
INTERNATIONAL, INC.



Ultra-Silt Dike®

Triangular silt dike barrier systems help contain eroded soils

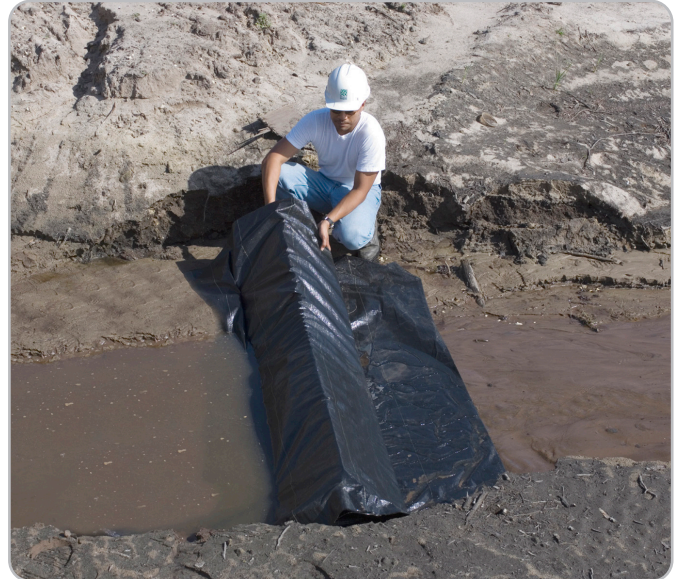
The Ultra-Silt Dike barrier consists of urethane foam and geotextile fabric. Designed with protective aprons on both sides of the barrier, there is only one sewn seam (on the front upstream side) which allows the barrier to be configured in several different applications. The materials and the design make this device lightweight, easy and fast to install, and more effective than other sediment control products.

Made of lightweight and durable materials, the Ultra-Silt Dike barrier comes in seven-foot section and installs in minutes with U-shaped wire staples.

The flexibility of the barrier allows it to be installed on rough and rocky terrain while the protective aprons on both sides of the barrier help prevent erosion and failure of the structure.

Product Highlights

- + Designed as an effective and economical alternative to straw bales, silt fence, and rock check dams.
- + Patented design provides effective erosion and sediment control.
- + Aprons on either side of dike prevent erosion and failure of the structure.
- + Lightweight and durable construction — installs in minutes.
- + Multiple units can be installed side-by-side for larger areas.
- + Other uses include: ditch check dams, diversion dikes, drop inlet protection, continuous barrier, temporary ditch liner and stream and pond protection.



Ultra-Silt Dike

Part#	Model	Overall Dimensions in. (mm)	Weight Lbs. (Kg)
9712	Silt Dike, Black	84 x 67 x 11 (2134 x 1702 x 267)	8.0 (3.6)
9715	Silt Dike, Green	84 x 67 x 11 (2134 x 1702 x 267)	8.0 (3.6)