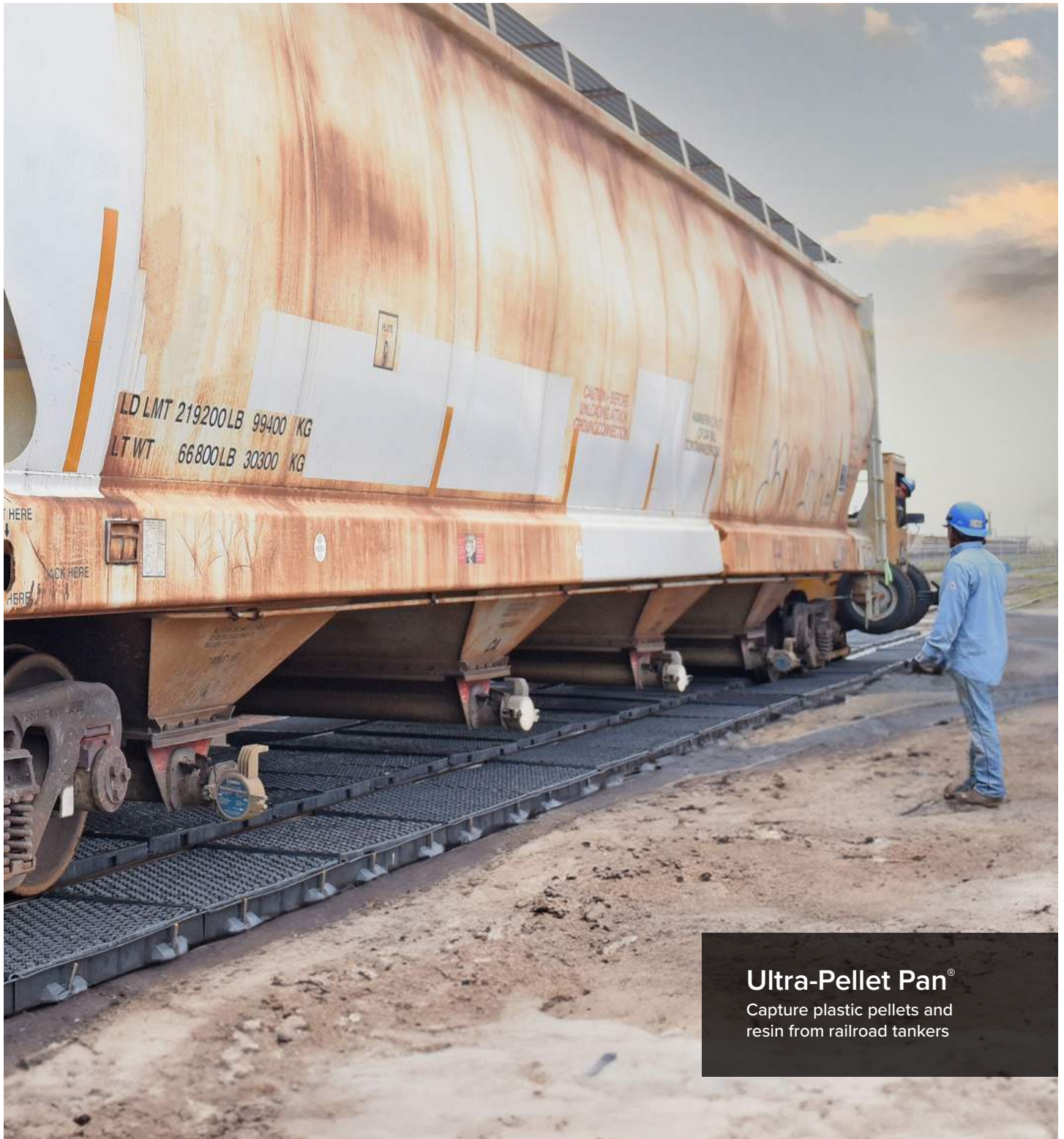




**ULTRATECH**  
INTERNATIONAL, INC.

## Railroad Spill Containment



### Ultra-Pellet Pan®

Capture plastic pellets and resin from railroad tankers

# Ultra-Track Pans®



## Capture hazardous spills from railroad tanker cars and locomotives

Ultra-Track Pans have been designed to provide spill containment at industrial rail sidings, locomotive maintenance, and fueling facilities.

Available in virtually any length, Ultra-Track Pans may be used to collect small spills and leaks OR to capture and channel off significant spills caused by defective equipment or a major overflow.

- + Prevent costly cleanup and regulatory fines.
- + Slip-resistant design.
- + All polyethylene construction — Rugged Track Pans withstand harsh chemicals and are designed to function in temperatures ranging from -40° F to +140° F.
- + Sealed System — Polyethylene gaskets\* keep spills from falling between the rails and Pans.
- + Trucks and other vehicles can drive over Track Pans with grates in place.†
- + Economical and easy to install.



\*To drive over Track Pans, firm footing must be beneath the pans; also must "ramp up" to side pans with asphalt or concrete.

†Polyethylene gaskets are used for most applications. Viton gaskets are available for crude oil applications. See website for more details.

### Simple Installation:



*Flow-through channels — All pans are connected "end-to-end" with bulkhead fittings, and a 3-inch diameter flow-through channel, allowing spills to quickly travel from one pan to the next.*



*Closed-cell, polyethylene gaskets are installed to provide a seal between the pans and rails. (Gaskets are provided.)*



*Side pans are secured in place with 24" rebar fasteners. Typical installs require two pieces of rebar per side pan.*

Visit [www.trackpans.com](http://www.trackpans.com) for more detailed information.

Patents: See [www.ultratechpatents.com](http://www.ultratechpatents.com)

Part#	Description	Includes	Outside Dimensions in. (mm)	Containment Capacity gal. (L)	Weight lbs. (kg)
9566	Center Track Pan with Grates	2 bulkhead fittings, 4 gaskets and 2 grates	53.5 x 53.5 x 6 (1,359 x 1,359 x 152)	18 (69)	112.0 (51.0)
9576	Side Track Pan with Grates	1 bulkhead fitting, 2 gaskets and 1 grate	53.5 x 27.5 x 6 (1,359 x 699 x 152)	19 (72)	58.0 (260.0)

Options: **9584** Rebar Fasteners with Protective Caps (20-pack) · **9559** 3" dia. Bulkhead Fitting (for below grade piping)  
 · **9571** Grate Only for Center Pan (Left) · **9572** Grate Only for Center Pan (Right) · **9573** Grate Only for Side Pan

# Ultra-Track Pans® Composite Models



**Modular, 20-foot spill containment pans share containment, providing unlimited capacity**

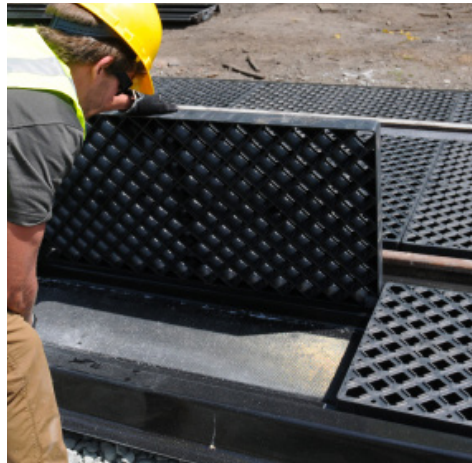
- + Modular, composite system – can be built and designed to almost any length (in 20 foot increments) depending on spill containment requirements.
- + Easy installation - minimal site preparation (no excavation) required.
- + Constructed with high strength, non-porous, corrosion resistant fiberglass for years of reliable service.
- + Low profile: 20' long x 4 7/8" high
- + Pandrol compatible
- + Rail side gasket sealing system – prevents spills from leaking between Track Pans and rails.
- + Ultra-Track Pans may be used independently, or connected to other pans via an optional drainage manifold.
- + Drainage manifold comes standard with clean out port to allow for removal of sludge blockages, etc. Installation requires half the ballast excavation of others ensuring tie foundation integrity.



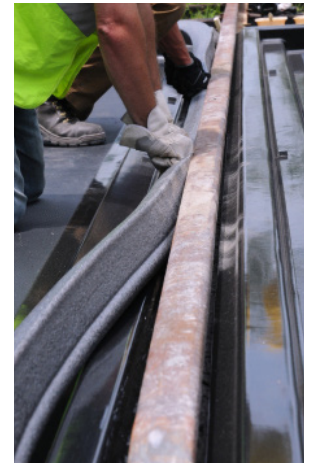
System shown includes one Center Pan (Part# 7200) and two Side Pans (Part# 7210)



Optional flow through technology increases containment capacity for larger spills while minimizing cleanup of smaller spills.



Optional polyethylene grating package available for safer foot traffic.



Optional rail side gaskets prevent leaking between rails and Track Pans.

Visit [www.trackpans.com](http://www.trackpans.com) for more detailed information.

Part#	Description	Dimensions in. (mm)	Containment Capacity gal. (L)	Weight lbs. (kg)
7200	Center Pan	255 x 57.25 x 4.50 (6,477 x 1,448 x 114)	209 (791)	177.0 (80.0)
			With grating: 191 (723)	With grating: 3770 (171.0)
7210	Side Pan	255 x 36 x 4.50 (6,477 x 914 x 114)	98 (371)	100.0 (45.0)
			With grating: 89 (337)	With grating: 200.0 (90.7)

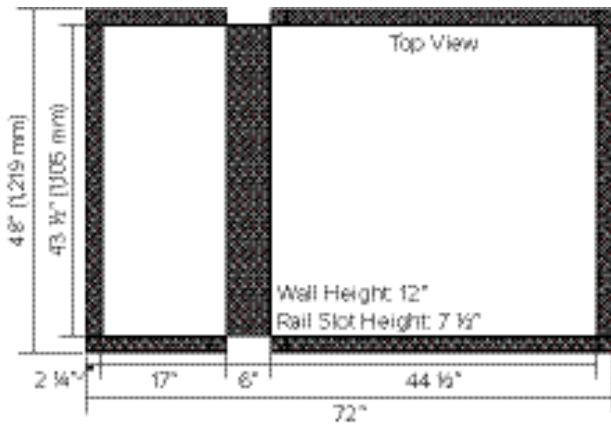
Options: 7220 Drain Manifold Center & Sides · 7223 Drain Manifold Center Only · 7225 Rail Gasket · 0420 Grating

# Ultra-Track Berm®



## Portable containment unit captures railcar leaks and spills

- + Lightweight and portable spill containment unit is easily placed under leaking/spilling railcars.
- + Dual-sump design provides protection for area on either side of the rail.
- + Closed-cell polyethylene foam provides secure sidewall structure.
- + Durable 40oz. (42 mil) PVC construction withstands harsh railroad conditions and provides excellent chemical compatibility.



Two (2) stainless steel camlock fittings allow quick and leak-free drainage of spilled chemicals.



Part#	Description	Material	Wall Height in. (mm)	Outside Dimensions in. (mm)	Inside Dimensions in. (mm)	Containment Capacity gal. (L)	Weight lbs. (kg)
8490	Ultra-Track Berm	40 oz. (42 Mil) PVC	12 (305)	72 x 48 (1,829 x 1,219)	67.5 x 43.5 (1,715 x 1,105)	144 (545)	24.0 (10.9)

# Ultra-Tanker Berm®



## Capture leak, drips and spills from tanker trucks and rail cars

- + Lightweight, portable spill containment unit can be quickly and easily put into place to contain leaks, drips and spills.
- + Heavy-duty, PVC material (40 oz) provides excellent chemical resistance – stands up to rigors on site or on the road.
- + Two included, pre-installed Camlock fittings (2") provide quick access points for drainage to larger containment/retention vessels, spill response vehicles or cleanup equipment
- + Closed cell foam provides sidewalls with structure—can be removed when not in use for more compact folding/storage.
- + Can be used under rail cars, tanker trucks or other equipment, vehicles, vessels or containers.
- + Available in 5' x 10', 10' x 10' and custom sizes..



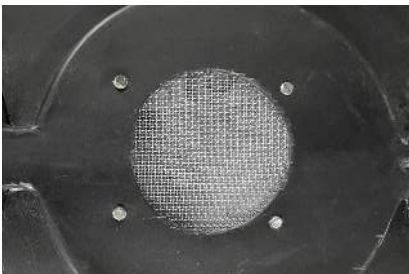
Part#	Dimensions ft. (m)	Containment Capacity gal. (L)	Weight lbs. (kg)
8725	10 x 5 x 1 (3 x 1.5 x 0.3)	374 (1,415.7)	65.0 (29.5)
8726	10 x 10 x 1 (3 x 3 x 0.3)	748 (2,831.4)	80.0 (36.3)

# Ultra-Pellet Pan<sup>®</sup>



## Capture plastic pellets and resin from railroad tankers

- + Sealed System—polyethylene gaskets keep spills from falling between the rails and pans.
- + Economical and easy to install.
- + Long work life - estimated to perform 20-30 years.
- + Low-profile: 20' long x 53.5" wide x 6" high
- + Low maintenance - Ultra-Pellet Pans will not rust or corrode. Polyethylene resin is treated with a UV inhibitor, resists degrading effects of the sun.
- + Low cost installation — lightweight Pellet Pans can be easily installed without heavy lifting equipment, i.e., forklifts, cranes, back-hoes, etc. Minimal tools and labor required.
- + Slip resistant surfaces - pans and grates have been designed with safety in mind. All top surfaces resist slips when wet or oily.



Drain close-up



7562

Visit [www.pelletcontainment.com](http://www.pelletcontainment.com) for more detailed information.

Part#	Description	Dimensions in. (mm)	Weight lbs. (kg)
7560	Center Pan w/ Grates	53.50 x 53.50 x 6 (1,359 x 1,359 x 152)	112.0 (51.0)
7562	Side Pan w/ Grates	53.50 x 27.50 x 6 (1,359 x 699 x 152)	58.0 (26.0)
7570	Pellet Deflector, 5-pack	16 x 48 (406 x 1,219)	5.0 (2.27)

# Ultra-Pellet Pan<sup>®</sup> Composite Model



Twenty foot containment pans provide large targets for resin spills

- + Constructed with high strength, nonporous, corrosion resistant fiberglass for years of reliable service.
- + Low-profile: 20' long x 4 7/8" high.
- + Pandrol compatible.
- + Rail side gasket sealing system prevents pellets from leaking between pans and rails.
- + Easy installation - minimal site preparation (no excavation) required.
- + Optional polyethylene (LLDPE) grating package available for safer foot traffic.



System shown includes Center Pan (Part# 7246) and Side Pan (Part# 7247)



Mesh drain allows liquids from contained spills or water from rain to pass through while capturing plastic pellets.

Visit [www.pelletcontainment.com](http://www.pelletcontainment.com) for more detailed information.

Part#	Description	Dimensions in. (mm)	Weight lbs. (kg)
7246	Center Pan	255 x 57.25 x 4.50 (6,477 x 1,448 x 114)	177.0 (80.0) With grating: 191.0 (723.0)
7247	Side Pan	255 x 36 x 4.50 (6,477 x 914 x 114)	100.0 (45.0) With grating: 89.0 (337.0)
7570	Pellet Deflector, 5-pack	16 x 48 (406 x 1,219)	

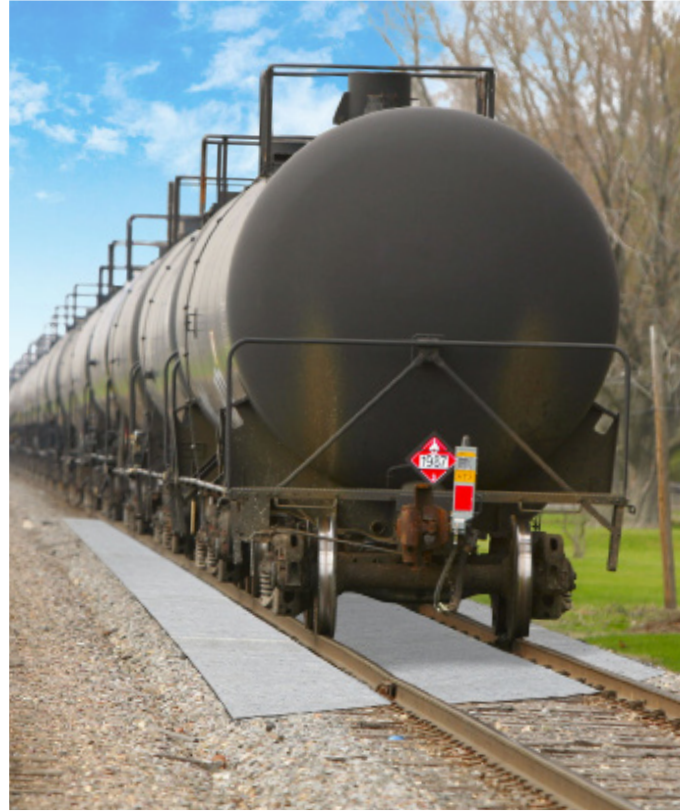
Options: **0420** Grating · **7230** Side Pan Rail Clips

# Ultra-Rail Mat®



## Absorb oils and fuels around railroad tracks during railcar maintenance

- + Ultra-Rail Mats are designed specifically with rail applications in mind. Half rolls can be used on the outside of rails; Full roll fits right between standard rails.
- + This heavy-duty mat, made with Ultra-Filter-Tex, is designed specifically to absorb oils and fuels, not water, from railcars during railyard maintenance
- + Allows large volumes of water to pass through while sorbing liquid hydrocarbons, including petroleum, animal and vegetable oils.
- + Cost effective—absorbs an average of 13 times its own weight of liquid hydrocarbons.
- + Approximately 85-90 % of sorbed oils can be reclaimed and the mats reused.



9310

Part#	Description	Dimensions ft. (m)	Absorption Capacity gal. (L)	Weight lbs. (kg)
9310	Rail Mat - Full Roll	250 x 5 x 0 (76.2 x 1.5 x 0)	1.5 (5.7) per sq. yd. - 6.70 L per sq. m.	125 (56.7)
9314	Rail Mat - Half Roll	250 x 2.5 x 0 (76.2 x 0.8 x 0)	1.5 (5.7) per sq. yd. - 6.70 L per sq. m.	63 (28.6)

