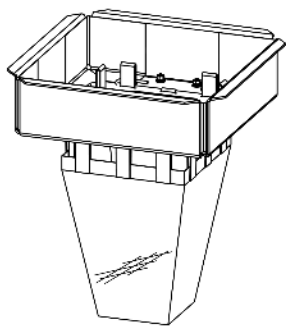
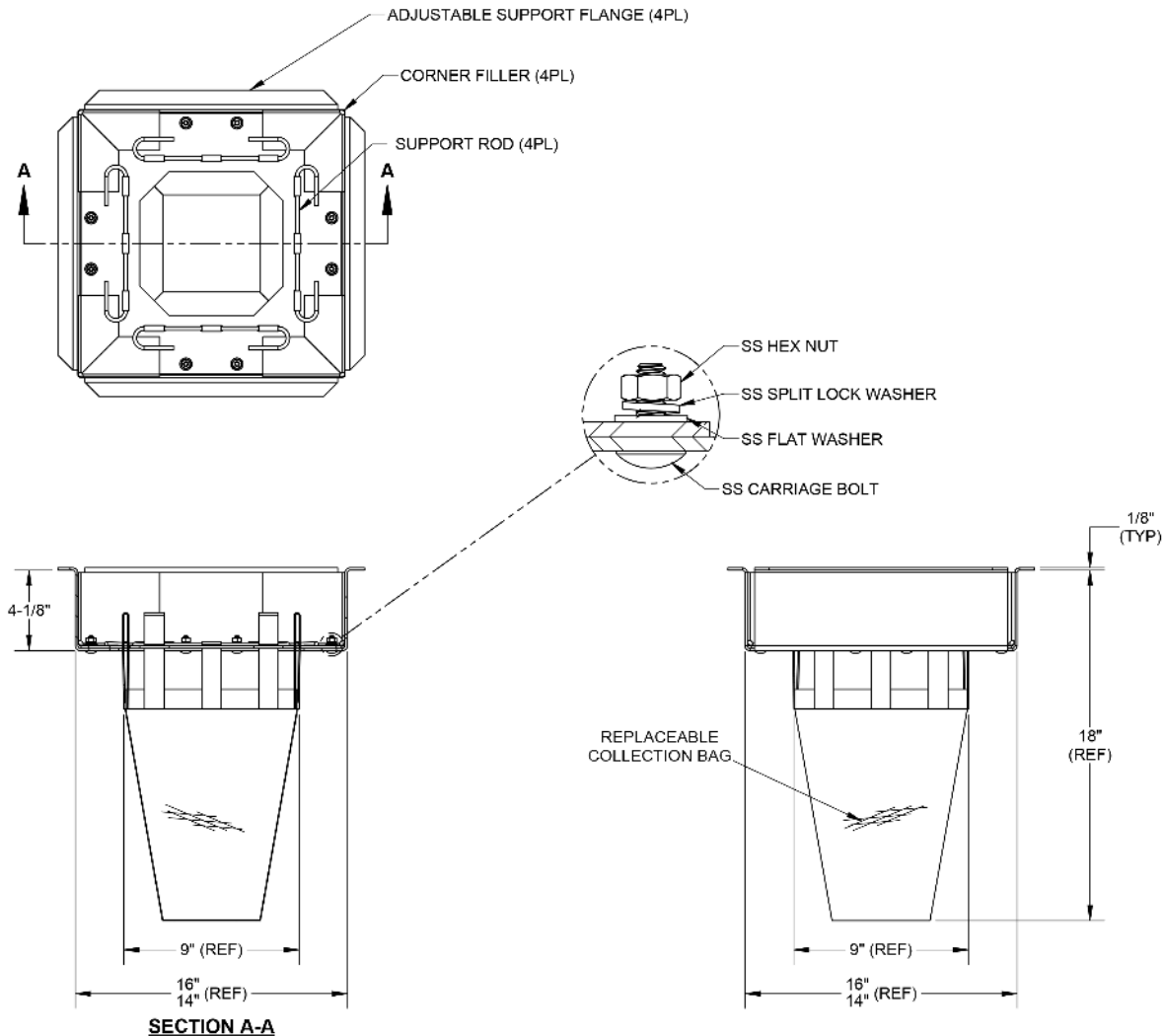


NOTES:

1. TOTAL WEIGHT, EMPTY: 15 LBS (MAX)
2. MATERIALS:
 1. FRAME: ALUMINUM ALLOY, 5000 SERIES
 2. COLLECTION BAG: GEOTEXTILE, 40 US SIEVE
 3. HARDWARE: STAINLESS STEEL
3. PERFORMANCE CHARACTERISTICS:
 1. DEBRIS CAPACITY: 0.34 CU. FT
 2. FILTERED FLOWRATE: 335 GPM (0.75 CFS)
 3. BYPASS FLOWRATE: 540 GPM (1.2 CFS)
4. CLEAR OPENING RANGE:
 1. MINIMUM SIZE: 14" X 16"
 2. MAXIMUM SIZE: 14" X 16"
5. TYPICAL INSTALLATION:

CAREFULLY REMOVE THE STORM GRATE, MEASURE CATCH BASIN FRAME CLEAR OPENING AND ADJUST FLANGES TO REST ON GRATE SUPPORT LEDGE. INSTALL DRAIN GUARD AND VERIFY EACH FLANGE IS SECURE AND THE UNIT IS SNUG WITH LITTLE MOVEMENT IN THE DRAIN. INSTALL CORNER FILLERS USING PROVIDED DOUBLE-SIDED TAPE. REINSTALL THE STORM GRATE DIRECTLY ON THE ADJUSTABLE SUPPORT FLANGES.
6. RECOMMENDED MINIMUM VAULT DEPTH 2" BELOW STORM GUARD



REFERENCE VIEW

SECTION A-A

| | | | | |
|---|---|---|--|--|
| <small> PROPRIETARY AND CONFIDENTIAL THIS DRAWING IS THE PROPERTY OF ULTRATECH AND IS LOANED TO YOU FOR THE EXPRESS PURPOSE OF THE PROJECT ONLY. IT IS NOT TO BE REPRODUCED, COPIED, OR TRANSMITTED IN ANY MANNER WITHOUT THE EXPRESS WRITTEN CONSENT OF ULTRATECH AND THAT TO BE USED FOR ANY OTHER PROJECT OR PURPOSE IS STRICTLY PROHIBITED. </small> | <small> UNLESS OTHERWISE SPECIFIED, ALL DIMENSIONS ARE IN INCHES AND DECIMALS THEREOF UNLESS OTHERWISE SPECIFIED. </small> | <small> FINISHES ARE TO BE AS SHOWN UNLESS OTHERWISE SPECIFIED. </small> | <small> APPROVAL DATE DWN R.V. 3/16/2022 CHKD J.P. 3/16/2022 ENGR J.P. UPD </small> | <p>ULTRATECH INTERNATIONAL, INC.</p> <p>ULTRA-STORM GUARD NOM. C.S. 15" X 15"</p> <p>SIZE: B DWG NO: BSM1515-1-000 REV: A</p> <p>SCALE: NONE SHEET 1 OF 1</p> |
| | PROJECT | <small> SEE NOTES </small> | <small> ULTRATECH 11555 DAVIS CREEK COURT JACKSONVILLE, FL 32206 813.947.7600 813.947.7601 WWW.ULTRATECH.COM </small> | |
| | MATERIAL | <small> SEE NOTES </small> | <small> SIZE: B DWG NO: BSM1515-1-000 REV: A </small> | |
| | | | | |