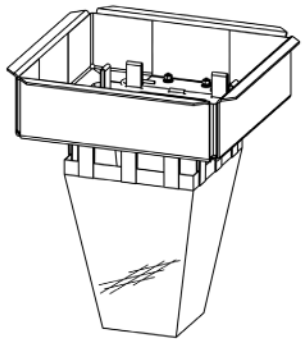
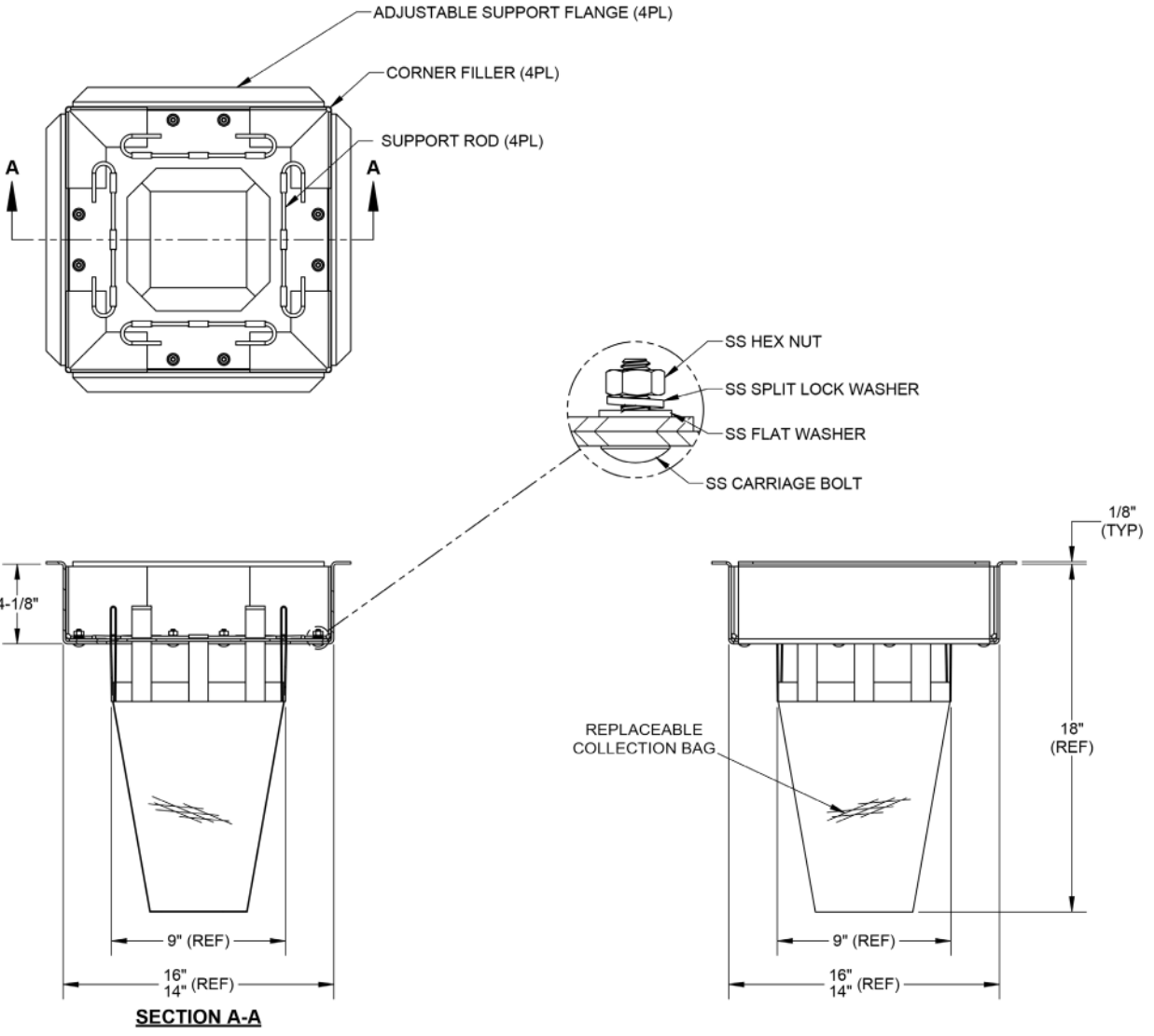


NOTES:

1. TOTAL WEIGHT, EMPTY: 15 LBS (MAX)
2. MATERIALS:
 1. FRAME: ALUMINUM ALLOY, 5000 SERIES
 2. COLLECTION BAG: GEOTEXTILE, 40 US SIEVE
 3. HARDWARE: STAINLESS STEEL
3. PERFORMANCE CHARACTERISTICS:
 1. DEBRIS CAPACITY: 0.34 CU. FT
 2. FILTERED FLOWRATE: 335 GPM (0.75 CFS)
 3. BYPASS FLOWRATE: 540 GPM (1.2 CFS)
4. CLEAR OPENING RANGE:
 1. MINIMUM SIZE: 14" X 16"
 2. MAXIMUM SIZE: 14" X 16"
5. TYPICAL INSTALLATION:

CAREFULLY REMOVE THE STORM GRATE, MEASURE CATCH BASIN FRAME CLEAR OPENING AND ADJUST FLANGES TO REST ON GRATE SUPPORT LEDGE. INSTALL DRAIN GUARD AND VERIFY EACH FLANGE IS SECURE AND THE UNIT IS SNUG WITH LITTLE MOVEMENT IN THE DRAIN. INSTALL CORNER FILLERS USING PROVIDED DOUBLE-SIDED TAPE.

REINSTALL THE STORM GRATE DIRECTLY ON THE ADJUSTABLE SUPPORT FLANGES.
6. RECOMMENDED MINIMUM VAULT DEPTH 2" BELOW DRAIN GUARD



REFERENCE VIEW

SECTION A-A

<small> PROPRIETARY AND CONFIDENTIAL THIS DOCUMENT IS THE PROPERTY OF ULTRATECH AND IS CONVEYED WITH THE EXPRESS CONDITION THAT IT AND THE INFORMATION CONTAINED IN IT ARE NOT TO BE USED, DISCLOSED, OR REPRODUCED IN WHOLE OR IN PART, FOR ANY PURPOSE WITHOUT THE EXPRESS WRITTEN CONSENT OF ULTRATECH AND THAT NO RIGHT IS GRANTED TO DISCLOSE OR SO USE ANY INFORMATION CONTAINED IN SAID DOCUMENT. </small>	<small> UNLESS OTHERWISE SPECIFIED REMOVE ALL BURRS BREAK SHARP EDGES .002 - .020 FILLETS .032 MAX DIMENSIONS ARE IN INCHES AND INCLUDE CHEMICALLY APPLIED OR PLATED FINISHES. </small>	<small> TOLERANCES: DEC .00 ± .01 DEC .000 ± .005 FRACT ± 1/16 ANGLE ± 2° </small>	APPROVAL DWN R.W. 3/16/2022 CHKR J.P. 3/16/2022 ENGR UPD	DATE 3/16/2022			
	PROJECT	ULTRATECH 11542 DAVIS CREEK COURT JACKSONVILLE, FL 32256 STORMWATERPRODUCTS.COM				SIZE DWG. NO B BSM1515-1-000	
	MATERIAL	SEE NOTES	DRAIN GUARD HD NOM. C.S. 15" X 15"			REV A	
			SCALE: NONE	SHEET 1 OF 1			