



ULTRATECH
INTERNATIONAL, INC.

Ultra-Pellet Berm®

Instructions

Before You Begin

Unpack the Ultra-Pellet Berm® and the four included rebar supports. Inspect the material for any tears, punctures, or other damage. If you find a problem, contact UltraTech Customer Service at 904-292-1611 before use.

Assembly

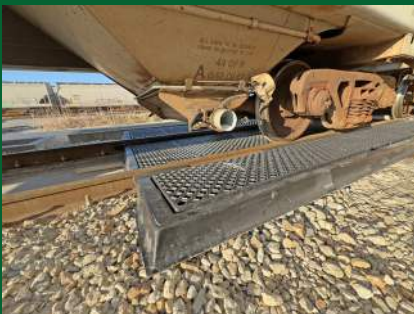
1. Turn the berm upside down so the bottom faces up.
2. Slide one piece of rebar into each of the four sleeves on the bottom of the berm.
3. Pull out the retaining flap at the end of each sleeve to lock the rebar in place and prevent it from sliding out.
4. Turn the berm upright.
5. **Your Ultra-Pellet Berm® is now ready for use.**



Maintenance

Remove accumulated pellets regularly, especially around the drain area. Keeping the drain clear helps reduce the risk of flooding.

ALSO AVAILABLE FROM ULTRATECH:



RAILCAR CONTAINMENT



STORMWATER MANAGEMENT



SPILL RESPONSE